



Thilo Liesenjohann*, Ansgar Diederichs*,
Alexander Schubert*, Felix Weiß*,
Eva Philipp#, Georg Nehls*

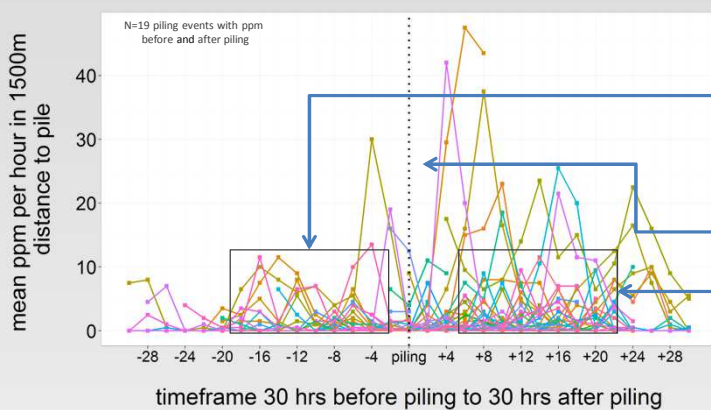
ABU-14

Wind farm construction areas: Are harbour porpoises (*Phocoena phocoena*) attracted after pile driving has stopped?



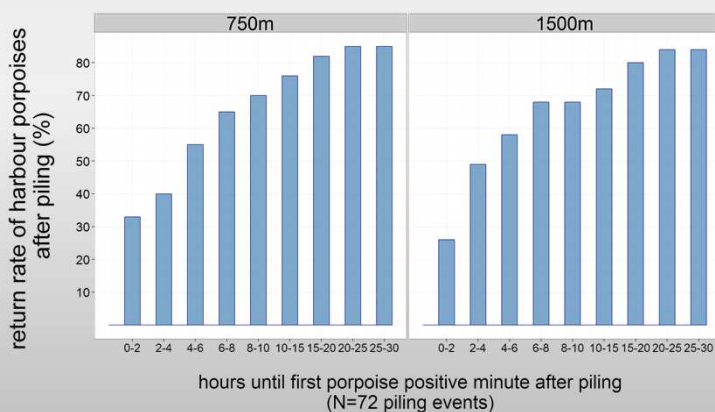
© Paul-Langrock.de

- a) Are harbour porpoises present in construction areas before piling?
- b) Are harbour porpoises displaced by deterrence and piling procedures?
- c) Are harbour porpoises returning after piling?

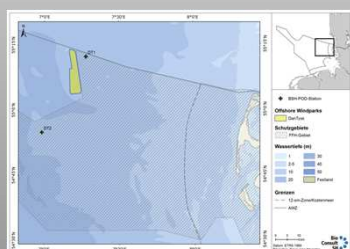


- a) Mean ppm per hour
4-20 hrs before piling: **1.4** (± 2.5)
- b) Mean ppm per hour
during piling: **0.5** (± 1.9)
- c) Mean ppm per hour
4-20 hrs after piling: **1.9** (± 5.9)

d) When do harbour harbour porpoises return?



- a) Harbour porpoises are present in windfarm construction areas,
- b) are displaced by deterrence and piling and
- c) do return...
- d) ...within hours after piling (\emptyset 3:17 hrs in 750m)



Sequences of C-POD data acquisition (porpoise positive minutes, ppm):

- 30hrs before and after piling: data sampling in the FFH- areas (C-PODs DT1 and DT2, 3-30km distance to piling).
- Up to 24hrs before and after piling: data sampling with C-POD in 750m and 1500m distance to pile (N=72 / 77 piling events).
- Ca. 1hr before piling: start of deterrence (pinger&sealscarer)
- 5 minutes before piling: start of noise mitigation (bubble curtain)

